

**Heating jackets  
for straight flanges**

**series HM-HJ-CF**

for operating temperatures up to 350°C

**for blind flanges**

**series HM-HJ-CFB**

for operating temperatures up to 350°C



**Description:**

Connection-ready heating jackets with insulation, designed for all common flange. Through their flexibility and fit exactness, an optimal warmth transfer is guaranteed.

**Features:**

- easy mounting and dismounting
- no additional warmth insulation necessary
- low surface strain
- long life

**Applications:**

Straight flange heating in vacuum technology, flange heating in process technology, etc.

## Technical data

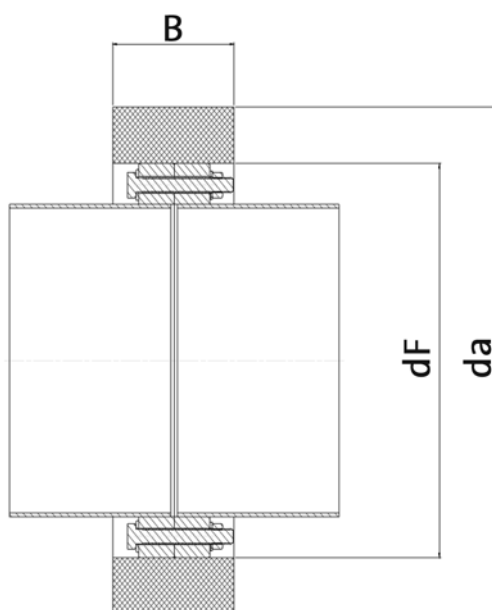
## HM-HJ-CF

nominal voltage	230 V
nominal power	see order data
outer sheath	aluminium-coated fiberglass
inner sheath	fiberglass
insulation	fiberglass 25 mm
heat conductor	glass-yarn-insulated resistance element
attachment type	hook and eye or velcro
protection class	0
protective system	IP 20 (not moisture proof)
surface temperature (switched on)	max. 350°C
length maincable	1,5 m for direct connection

## Order data

type	power W	dF mm	da mm	B mm	order no.
CF 40	30	69,5	125,0	50	40000040
CF 65	65	113,5	170,0	60	40000065
CF 100	90	152,0	210,0	75	40000100
CF 150	160	202,5	260,0	75	40000150
CF 200	190	253,0	310,0	80	40000200
CF 250	235	306,0	365,0	80	40000250

Other lengths, voltages and power are available upon request.



## Technical data

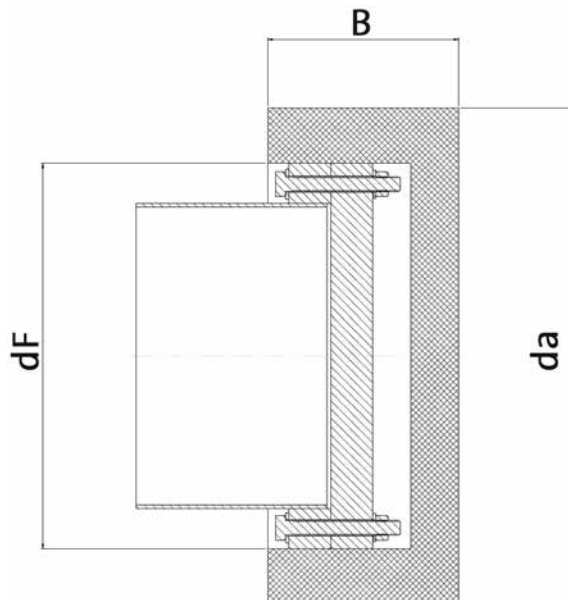
## HM-HJ-CFB

nominal voltage	230 V AC
nominal power	see order data
outer sheath	aluminium-coated fiberglass
inner sheath	fiberglass
insulation	fiberglass 25 mm
heat conductor	glass-yarn-insulated resistance element
attachment type	hook and eye or velcro
protection class	0
protective system	IP 20 (not moisture proof)
surface temperature (switched on)	max. 350°C
length maincable	1,5 m for direct connection

## Order data

type	power W	dF mm	da mm	B mm	order no.
CF 40-B	44	69,5	125,0	76	41000040
CF 65-B	115	113,5	170,0	86	41000065
CF 100-B	150	152,0	210,0	100	41000100
CF 150-B	230	202,5	260,0	100	41000150
CF 200-B	360	253,0	310,0	105	41000200
CF 250-B	510	306,0	365,0	105	41000250

Other lengths, voltages and power are available upon request.



# MOHR & CO

Winkler AG  
D-69181 Leimen

Gottlieb-Daimler-Straße 2  
Tel. + 49 (0) 6224 7 10 93 + 94

mohr@labo-mohr.de  
www.labo-mohr.de